



# Title Plan - LT 512054

---

**Survey Number** LT 512054  
**Surveyor Reference** 1510-139652-01 Lakes Stage 2UV  
**Surveyor** Michael Peter Dewhirst  
**Survey Firm** Harrison Grierson Consultants Ltd  
**Surveyor Declaration** I Michael Peter Dewhirst, being a licensed cadastral surveyor, certify that:  
(a) this dataset provided by me and its related survey are accurate, correct and in accordance with the Cadastral Survey Act 2002 and the Rules for Cadastral Survey 2010, and  
(b) the survey was undertaken by me or under my personal direction.  
Declared on 27 Sep 2017 12:40 PM

---

## Survey Details

**Dataset Description** Lots 1-109, 200-203, 210-212 and 300-309 being a subdivision of Lot 445 & 853 DP 414134 and Lot 3 & 852 DP 473714

**Status** Approved as to Survey

**Land District** South Auckland

**Submitted Date** 27/09/2017

**Survey Class** Class A

**Survey Approval Date** 28/09/2017

**Deposit Date**

---

## Territorial Authorities

Tauranga City

---

## Comprised In

CT 648314  
CT 648310  
CT 452955

---

## Created Parcels

Parcels	Parcel Intent	Area	CT Reference
Area SG Deposited Plan 512054	Land Covenant		
Area SH Deposited Plan 512054	Land Covenant		
Area SI Deposited Plan 512054	Land Covenant		
Area SJ Deposited Plan 512054	Land Covenant		
Area SK Deposited Plan 512054	Land Covenant		
Area SL Deposited Plan 512054	Land Covenant		
Area SM Deposited Plan 512054	Land Covenant		
Area SN Deposited Plan 512054	Land Covenant		
Area SO Deposited Plan 512054	Land Covenant		
Area SP Deposited Plan 512054	Land Covenant		
Area SQ Deposited Plan 512054	Land Covenant		
Area SR Deposited Plan 512054	Land Covenant		
Area SS Deposited Plan 512054	Land Covenant		
Area ST Deposited Plan 512054	Land Covenant		
Area SU Deposited Plan 512054	Land Covenant		
Area SV Deposited Plan 512054	Land Covenant		
Area SW Deposited Plan 512054	Land Covenant		

# Title Plan - LT 512054

---

## Created Parcels

Parcels	Parcel Intent	Area	CT Reference
Area SX Deposited Plan 512054	Land Covenant		
Area SY Deposited Plan 512054	Land Covenant		
Area SZ Deposited Plan 512054	Land Covenant		
Area TA Deposited Plan 512054	Land Covenant		
Area TB Deposited Plan 512054	Land Covenant		
Area TC Deposited Plan 512054	Land Covenant		
Area RT Deposited Plan 512054	Land Covenant		
Area RU Deposited Plan 512054	Land Covenant		
Area RV Deposited Plan 512054	Land Covenant		
Area RW Deposited Plan 512054	Land Covenant		
Area RX Deposited Plan 512054	Land Covenant		
Area RY Deposited Plan 512054	Land Covenant		
Area RZ Deposited Plan 512054	Land Covenant		
Area SA Deposited Plan 512054	Land Covenant		
Area SB Deposited Plan 512054	Land Covenant		
Area SC Deposited Plan 512054	Land Covenant		
Area SD Deposited Plan 512054	Land Covenant		
Area SE Deposited Plan 512054	Land Covenant		
Area SF Deposited Plan 512054	Land Covenant		
Lot 1 Deposited Plan 512054	Fee Simple Title	0.0557 Ha	787501
Lot 2 Deposited Plan 512054	Fee Simple Title	0.0540 Ha	787502
Lot 3 Deposited Plan 512054	Fee Simple Title	0.0492 Ha	787503
Lot 4 Deposited Plan 512054	Fee Simple Title	0.0612 Ha	787504
Lot 5 Deposited Plan 512054	Fee Simple Title	0.0720 Ha	787505
Lot 6 Deposited Plan 512054	Fee Simple Title	0.0513 Ha	787506
Lot 7 Deposited Plan 512054	Fee Simple Title	0.0524 Ha	787507
Lot 8 Deposited Plan 512054	Fee Simple Title	0.0523 Ha	787508
Lot 9 Deposited Plan 512054	Fee Simple Title	0.0652 Ha	787509
Lot 10 Deposited Plan 512054	Fee Simple Title	0.0446 Ha	787510
Lot 11 Deposited Plan 512054	Fee Simple Title	0.0449 Ha	787511
Lot 12 Deposited Plan 512054	Fee Simple Title	0.0482 Ha	787512
Lot 13 Deposited Plan 512054	Fee Simple Title	0.0384 Ha	787513
Lot 14 Deposited Plan 512054	Fee Simple Title	0.0475 Ha	787514
Lot 15 Deposited Plan 512054	Fee Simple Title	0.0470 Ha	787515
Lot 16 Deposited Plan 512054	Fee Simple Title	0.0399 Ha	787516
Lot 17 Deposited Plan 512054	Fee Simple Title	0.0399 Ha	787517
Lot 18 Deposited Plan 512054	Fee Simple Title	0.0414 Ha	787518
Lot 19 Deposited Plan 512054	Fee Simple Title	0.0524 Ha	787519
Lot 20 Deposited Plan 512054	Fee Simple Title	0.0441 Ha	787520
Lot 21 Deposited Plan 512054	Fee Simple Title	0.0423 Ha	787521
Lot 22 Deposited Plan 512054	Fee Simple Title	0.0448 Ha	787522
Lot 23 Deposited Plan 512054	Fee Simple Title	0.0530 Ha	787523
Lot 24 Deposited Plan 512054	Fee Simple Title	0.0510 Ha	787524
Lot 25 Deposited Plan 512054	Fee Simple Title	0.0424 Ha	787525

# Title Plan - LT 512054

---

## Created Parcels

Parcels	Parcel Intent	Area	CT Reference
Lot 26 Deposited Plan 512054	Fee Simple Title	0.0400 Ha	787526
Lot 27 Deposited Plan 512054	Fee Simple Title	0.0400 Ha	787527
Lot 28 Deposited Plan 512054	Fee Simple Title	0.0400 Ha	787528
Lot 29 Deposited Plan 512054	Fee Simple Title	0.0400 Ha	787529
Lot 30 Deposited Plan 512054	Fee Simple Title	0.0400 Ha	787530
Lot 31 Deposited Plan 512054	Fee Simple Title	0.0400 Ha	787531
Lot 32 Deposited Plan 512054	Fee Simple Title	0.0400 Ha	787532
Lot 33 Deposited Plan 512054	Fee Simple Title	0.0400 Ha	787533
Lot 34 Deposited Plan 512054	Fee Simple Title	0.0400 Ha	787534
Lot 35 Deposited Plan 512054	Fee Simple Title	0.0400 Ha	787535
Lot 36 Deposited Plan 512054	Fee Simple Title	0.0427 Ha	787536
Lot 37 Deposited Plan 512054	Fee Simple Title	0.0470 Ha	787537
Lot 38 Deposited Plan 512054	Fee Simple Title	0.0484 Ha	787538
Lot 39 Deposited Plan 512054	Fee Simple Title	0.0489 Ha	787539
Lot 40 Deposited Plan 512054	Fee Simple Title	0.0494 Ha	787540
Lot 41 Deposited Plan 512054	Fee Simple Title	0.0472 Ha	787541
Lot 42 Deposited Plan 512054	Fee Simple Title	0.0519 Ha	787542
Lot 43 Deposited Plan 512054	Fee Simple Title	0.0369 Ha	787543
Lot 44 Deposited Plan 512054	Fee Simple Title	0.0458 Ha	787544
Lot 45 Deposited Plan 512054	Fee Simple Title	0.0454 Ha	787545
Lot 46 Deposited Plan 512054	Fee Simple Title	0.0501 Ha	787546
Lot 47 Deposited Plan 512054	Fee Simple Title	0.0449 Ha	787547
Lot 48 Deposited Plan 512054	Fee Simple Title	0.0449 Ha	787548
Lot 49 Deposited Plan 512054	Fee Simple Title	0.0487 Ha	787549
Lot 50 Deposited Plan 512054	Fee Simple Title	0.0367 Ha	787550
Lot 51 Deposited Plan 512054	Fee Simple Title	0.0367 Ha	787551
Lot 52 Deposited Plan 512054	Fee Simple Title	0.0631 Ha	787552
Lot 53 Deposited Plan 512054	Fee Simple Title	0.0482 Ha	787553
Lot 54 Deposited Plan 512054	Fee Simple Title	0.0357 Ha	787554
Lot 55 Deposited Plan 512054	Fee Simple Title	2.6923 Ha	787555
Lot 56 Deposited Plan 512054	Fee Simple Title	0.1087 Ha	787556
Lot 57 Deposited Plan 512054	Fee Simple Title	0.0726 Ha	787557
Lot 58 Deposited Plan 512054	Fee Simple Title	0.0724 Ha	787558
Lot 59 Deposited Plan 512054	Fee Simple Title	0.0731 Ha	787559
Lot 60 Deposited Plan 512054	Fee Simple Title	0.0802 Ha	787560
Lot 61 Deposited Plan 512054	Fee Simple Title	0.0722 Ha	787561
Lot 62 Deposited Plan 512054	Fee Simple Title	0.0716 Ha	787562
Lot 63 Deposited Plan 512054	Fee Simple Title	0.0700 Ha	787563
Lot 64 Deposited Plan 512054	Fee Simple Title	0.0704 Ha	787564
Lot 65 Deposited Plan 512054	Fee Simple Title	0.0702 Ha	787565
Lot 66 Deposited Plan 512054	Fee Simple Title	0.0698 Ha	787566
Lot 67 Deposited Plan 512054	Fee Simple Title	0.0699 Ha	787567
Lot 68 Deposited Plan 512054	Fee Simple Title	0.0698 Ha	787568
Lot 69 Deposited Plan 512054	Fee Simple Title	0.0698 Ha	787569

# Title Plan - LT 512054

---

## Created Parcels

Parcels	Parcel Intent	Area	CT Reference
Lot 70 Deposited Plan 512054	Fee Simple Title	0.0709 Ha	787570
Lot 71 Deposited Plan 512054	Fee Simple Title	0.0426 Ha	787571
Lot 72 Deposited Plan 512054	Fee Simple Title	0.0390 Ha	787572
Lot 73 Deposited Plan 512054	Fee Simple Title	0.0341 Ha	787573
Lot 74 Deposited Plan 512054	Fee Simple Title	0.0341 Ha	787574
Lot 75 Deposited Plan 512054	Fee Simple Title	0.0341 Ha	787575
Lot 76 Deposited Plan 512054	Fee Simple Title	0.0341 Ha	787576
Lot 77 Deposited Plan 512054	Fee Simple Title	0.0360 Ha	787577
Lot 78 Deposited Plan 512054	Fee Simple Title	0.0398 Ha	787578
Lot 79 Deposited Plan 512054	Fee Simple Title	0.0435 Ha	787579
Lot 80 Deposited Plan 512054	Fee Simple Title	0.0358 Ha	787580
Lot 81 Deposited Plan 512054	Fee Simple Title	0.0358 Ha	787581
Lot 82 Deposited Plan 512054	Fee Simple Title	0.0532 Ha	787582
Lot 83 Deposited Plan 512054	Fee Simple Title	0.0435 Ha	787583
Lot 84 Deposited Plan 512054	Fee Simple Title	0.0441 Ha	787584
Lot 85 Deposited Plan 512054	Fee Simple Title	0.0494 Ha	787585
Lot 86 Deposited Plan 512054	Fee Simple Title	0.0386 Ha	787586
Lot 87 Deposited Plan 512054	Fee Simple Title	0.0341 Ha	787587
Lot 88 Deposited Plan 512054	Fee Simple Title	0.0341 Ha	787588
Lot 89 Deposited Plan 512054	Fee Simple Title	0.0341 Ha	787589
Lot 90 Deposited Plan 512054	Fee Simple Title	0.0341 Ha	787590
Lot 91 Deposited Plan 512054	Fee Simple Title	0.0391 Ha	787591
Lot 92 Deposited Plan 512054	Fee Simple Title	0.0391 Ha	787592
Lot 93 Deposited Plan 512054	Fee Simple Title	0.0439 Ha	787593
Lot 94 Deposited Plan 512054	Fee Simple Title	0.0641 Ha	787594
Lot 95 Deposited Plan 512054	Fee Simple Title	0.0377 Ha	787595
Lot 96 Deposited Plan 512054	Fee Simple Title	0.0458 Ha	787596
Lot 97 Deposited Plan 512054	Fee Simple Title	0.0422 Ha	787597
Lot 98 Deposited Plan 512054	Fee Simple Title	0.0386 Ha	787598
Lot 99 Deposited Plan 512054	Fee Simple Title	0.0351 Ha	787599
Lot 100 Deposited Plan 512054	Fee Simple Title	0.0341 Ha	787600
Lot 101 Deposited Plan 512054	Fee Simple Title	0.0341 Ha	787601
Lot 102 Deposited Plan 512054	Fee Simple Title	0.0341 Ha	787602
Lot 103 Deposited Plan 512054	Fee Simple Title	0.0417 Ha	787603
Lot 104 Deposited Plan 512054	Fee Simple Title	0.0341 Ha	787604
Lot 105 Deposited Plan 512054	Fee Simple Title	0.0341 Ha	787605
Lot 106 Deposited Plan 512054	Fee Simple Title	0.0341 Ha	787606
Lot 107 Deposited Plan 512054	Fee Simple Title	0.0346 Ha	787607
Lot 108 Deposited Plan 512054	Fee Simple Title	0.0423 Ha	787608
Lot 109 Deposited Plan 512054	Fee Simple Title	0.0418 Ha	787609
Lot 200 Deposited Plan 512054	Vesting on Deposit for Road	0.2095 Ha	
Lot 201 Deposited Plan 512054	Vesting on Deposit for Road	1.0624 Ha	

# Title Plan - LT 512054

---

## Created Parcels

Parcels	Parcel Intent	Area	CT Reference
Lot 202 Deposited Plan 512054	Vesting on Deposit for Road	0.4723 Ha	
Lot 203 Deposited Plan 512054	Vesting on Deposit for Road	0.0045 Ha	
Lot 210 Deposited Plan 512054	Fee Simple Title	0.0098 Ha	Multiple
Lot 211 Deposited Plan 512054	Fee Simple Title	0.0304 Ha	Multiple
Lot 212 Deposited Plan 512054	Fee Simple Title	0.0103 Ha	Multiple
Lot 300 Deposited Plan 512054	Vesting on Deposit for Local Purpose Reserve	0.0221 Ha	787496
Lot 301 Deposited Plan 512054	Vesting on Deposit for Local Purpose Reserve	0.1866 Ha	787497
Lot 302 Deposited Plan 512054	Vesting on Deposit for Local Purpose Reserve	0.0165 Ha	787498
Lot 303 Deposited Plan 512054	Vesting on Deposit for Recreation Reserve (Territorial Authority)	0.3002 Ha	787499
Lot 304 Deposited Plan 512054	Vesting on Deposit for Recreation Reserve (Territorial Authority)	3.4992 Ha	787500
Lot 305 Deposited Plan 512054	Vesting on Deposit for Local Purpose Reserve	0.7345 Ha	787610
Lot 306 Deposited Plan 512054	Vesting on Deposit for Local Purpose Reserve	0.0004 Ha	787611
Lot 307 Deposited Plan 512054	Vesting on Deposit for Local Purpose Reserve	0.0011 Ha	787612
Lot 308 Deposited Plan 512054	Vesting on Deposit for Local Purpose Reserve	0.0005 Ha	787613
Lot 309 Deposited Plan 512054	Vesting on Deposit for Local Purpose Reserve	0.0007 Ha	787875
Area A Deposited Plan 512054	Easement		
Area B Deposited Plan 512054	Easement		
Area C Deposited Plan 512054	Easement		
Area D Deposited Plan 512054	Easement		
Area E Deposited Plan 512054	Easement		
Area F Deposited Plan 512054	Easement		
Area G Deposited Plan 512054	Easement		
Area H Deposited Plan 512054	Easement		
Area I Deposited Plan 512054	Easement		
Area J Deposited Plan 512054	Easement		
Area K Deposited Plan 512054	Easement		
Area L Deposited Plan 512054	Easement		
Area M Deposited Plan 512054	Easement		
Area N Deposited Plan 512054	Easement		
Area O Deposited Plan 512054	Easement		
Area P Deposited Plan 512054	Easement		

# Title Plan - LT 512054

---

## Created Parcels

Parcels	Parcel Intent	Area	CT Reference
Area Q Deposited Plan 512054	Easement		
Area R Deposited Plan 512054	Easement		
Area RA Deposited Plan 512054	Land Covenant		
Area RB Deposited Plan 512054	Land Covenant		
Area RC Deposited Plan 512054	Land Covenant		
Area RD Deposited Plan 512054	Land Covenant		
Area RE Deposited Plan 512054	Land Covenant		
Area RF Deposited Plan 512054	Land Covenant		
Area RG Deposited Plan 512054	Land Covenant		
Area RH Deposited Plan 512054	Land Covenant		
Area RI Deposited Plan 512054	Land Covenant		
Area RJ Deposited Plan 512054	Land Covenant		
Area RK Deposited Plan 512054	Land Covenant		
Area RL Deposited Plan 512054	Land Covenant		
Area RM Deposited Plan 512054	Land Covenant		
Area RN Deposited Plan 512054	Land Covenant		
Area RO Deposited Plan 512054	Land Covenant		
Area RP Deposited Plan 512054	Land Covenant		
Area RS Deposited Plan 512054	Land Covenant		
<b>Total Area</b>		14.3973 Ha	



**Land Registration District**

South Auckland

**Plan Number**

DP 512054

TCC Ref: RC25104-01  
Harrison Grierson Ref: 1510-139652-01

<b>Memorandum of Easements</b> (Pursuant to s243 Resource Management Act 1991)			
<b>Purpose</b>	<b>Shown</b>	<b>Servient Tenement</b>	<b>Dominant Tenement</b>
Right of Way	A	Lot 210 hereon	Lots 11-13 hereon
Right to drain Water & Sewage	B	Lot 211 hereon	Lots 40-45 hereon
Right to convey Electricity, Gas & Water			
Right to convey Telecommunications and Computer Media			
	C	Lot 212 hereon	Lots 52-53 hereon

<b>Memorandum of Easements in Gross</b> (Pursuant to s243 Resource Management Act 1991)			
<b>Purpose</b>	<b>Shown</b>	<b>Servient Tenement</b>	<b>Grantee</b>
Right to drain Water & Sewage	A	Lot 210 hereon	Tauranga City Council
	B	Lot 211 hereon	
	C	Lot 212 hereon	
Right to drain Water	D	Lot 300 hereon	

<b>Schedule of Proposed Easements in Gross</b>			
<b>Purpose</b>	<b>Shown</b>	<b>Servient Tenement</b>	<b>Grantee</b>
Right to convey Telecommunications and Computer Media	A	Lot 210 hereon	Waikato Networks Ltd
	B	Lot 211 hereon	
	C	Lot 212 hereon	

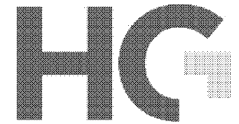


<b>Schedule of Proposed Easements in Gross (cont)</b>			
<b>Purpose</b>	<b>Shown</b>	<b>Servient Tenement</b>	<b>Grantee</b>
Right to convey Electricity	R	Lot 55 hereon	Powerco Ltd
	B	Lot 211 hereon	
	K, Q	Lot 304 hereon	
	J, P	Lot 305 hereon	
Right to convey Gas	A	Lot 210 hereon	First Gas Ltd
	B	Lot 211 hereon	
	C	Lot 212 hereon	
	H, K, L, N	Lot 304 hereon	
	G, I, J, M, O	Lot 305 hereon	

<b>Schedule of Existing Easements in Gross</b>			
<b>Purpose</b>	<b>Shown</b>	<b>Servient Tenement</b>	<b>Document Number</b>
Right to convey Gas	E	Lot 301 hereon	TE H472499
	F		EI 8141408.2

<b>Schedule of Existing Easements to be Cancelled</b> (Pursuant to s243 Resource Management Act 1991)			
<b>Purpose</b>	<b>Shown</b>	<b>Servient Tenement</b>	<b>Document Number</b>
Right of Way Right to drain Water & Sewage	A DP 414134	Lot 853 DP 414134	EI 8093868.4
Right to convey Electricity, Gas & Water Right to convey Telecommunications and Computer Media			EI 8093868.6





<b>Schedule of Existing Easements to be Cancelled</b>			
<b>Purpose</b>	<b>Shown</b>	<b>Servient Tenement</b>	<b>Document Number</b>
Right to convey Gas	A, F, G DP 473714	Lot 3 DP 473714	TE H472499
	B DP 414134	Lot 853 DP 414134	

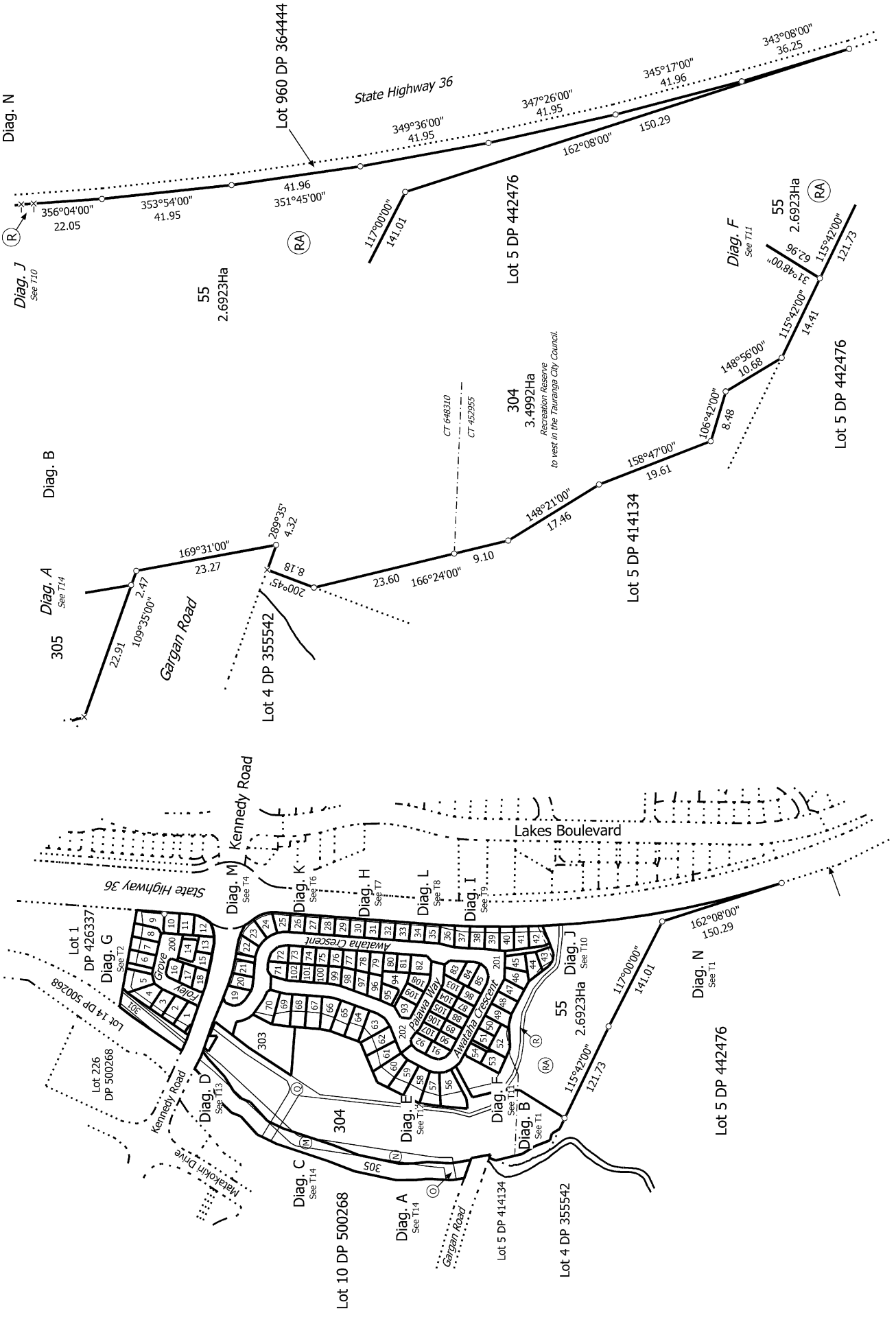
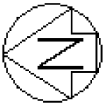
Areas R, RA- RP, RS-RZ, SA-SZ and TA-TC are subject to a Consent Notice.

#### **Amalgamation Conditions**

That Lot 210 hereon be held as 3 undivided one third shares by the owners of Lots 11-13 hereon as Tenants in Common in the said shares and that individual computer registers be issued in accordance therewith. See request 1381374.

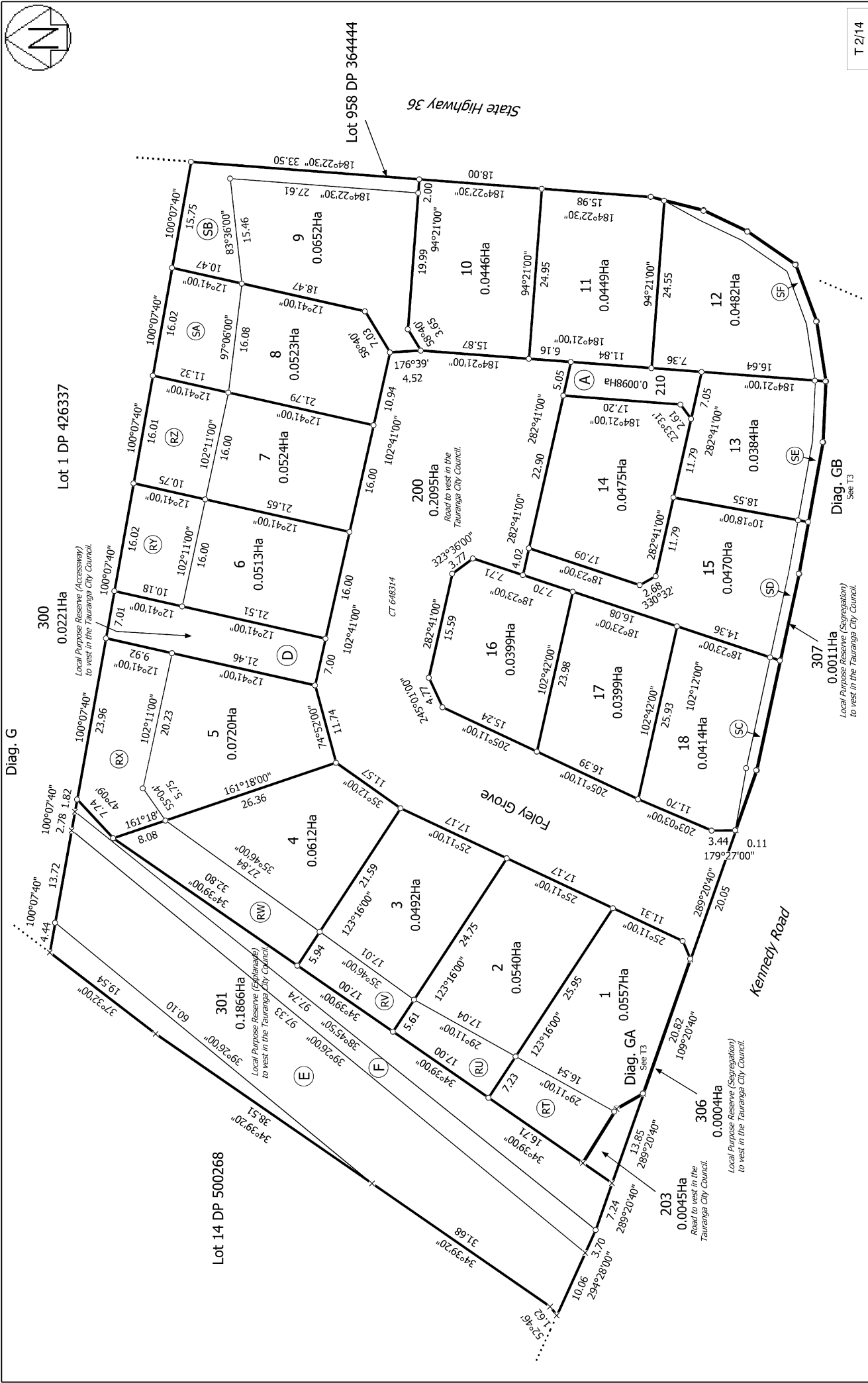
That Lot 211 hereon be held as 6 undivided one sixth shares by the owners of Lots 40-45 hereon as Tenants in Common in the said shares and that individual computer registers be issued in accordance therewith. See request 1381374.

That Lot 212 hereon be held as 2 undivided one half shares by the owners of Lots 52-53 hereon as Tenants in Common in the said shares and that individual computer registers be issued in accordance therewith. See request 1381374.



T 1/14

<p>Land District: South Auckland</p>	<p>Lots 1-109, 200-203, 210-212 and 300-309 being a subdivision of Lot 445 &amp; 853 DP 414134 and Lot 3 &amp; 852 DP 473714</p>	<p>Surveyor: Michael Peter Dewhirst Firm: Harrison Grierson Consultants Ltd</p>	<p>Title Plan LT 512054 Approved on: 28/09/2017</p>
<p><b>Digitally Generated Plan</b> Generated on: 28/09/2017 09:20am Page 10 of 23</p>			

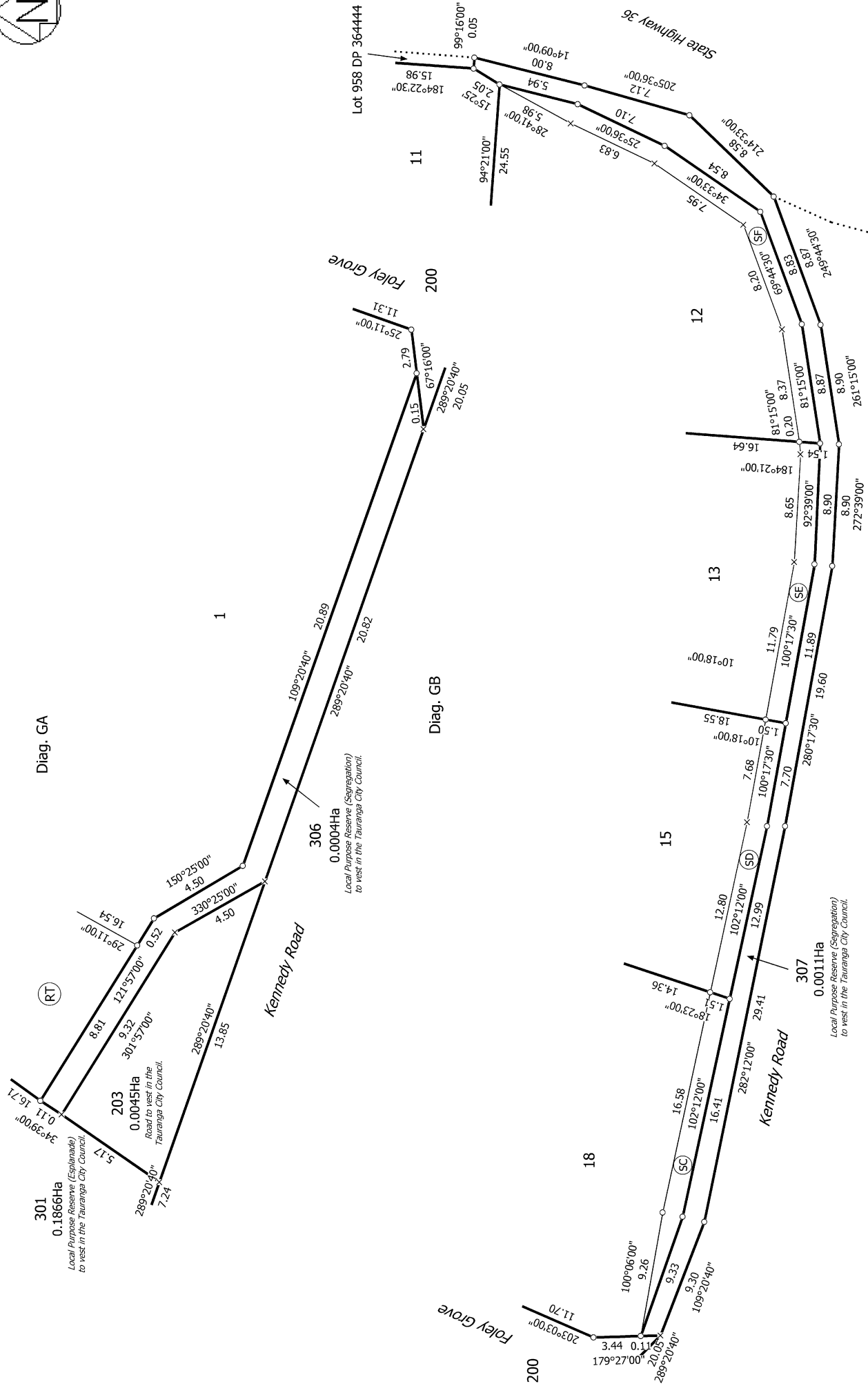


T 2/14

**Lots 1-109, 200-203, 210-212 and 300-309 being a subdivision of Lot 445 & 853 DP 414134 and Lot 3 & 852 DP 473714**

Surveyor: Michael Peter Dewhirst  
 Firm: Harrison Grierson Consultants Ltd

**Title Plan**  
 LT 512054  
 Approved on: 28/09/2017



T 3/14

Land District: South Auckland

Digitally Generated Plan

Generated on: 28/09/2017 09:20am Page 12 of 23

Lots 1-109, 200-203, 210-212 and 300-309 being a subdivision of Lot 445 & 853

DP 414134 and Lot 3 & 852 DP 473714

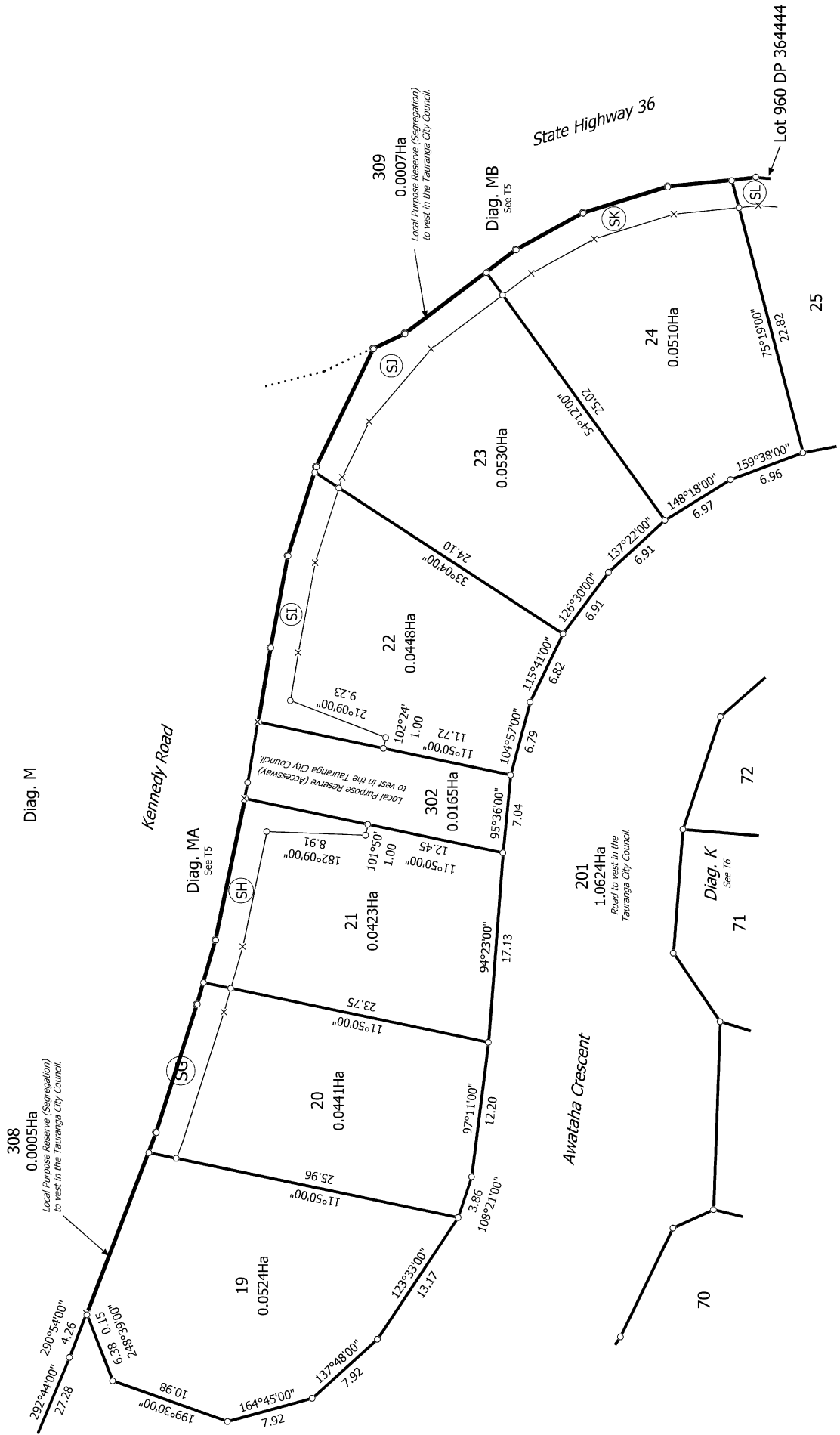
Surveyor: Michael Peter Dewhirst

Firm: Harrison Grierson Consultants Ltd

Title Plan

LT 512054

Approved on: 28/09/2017



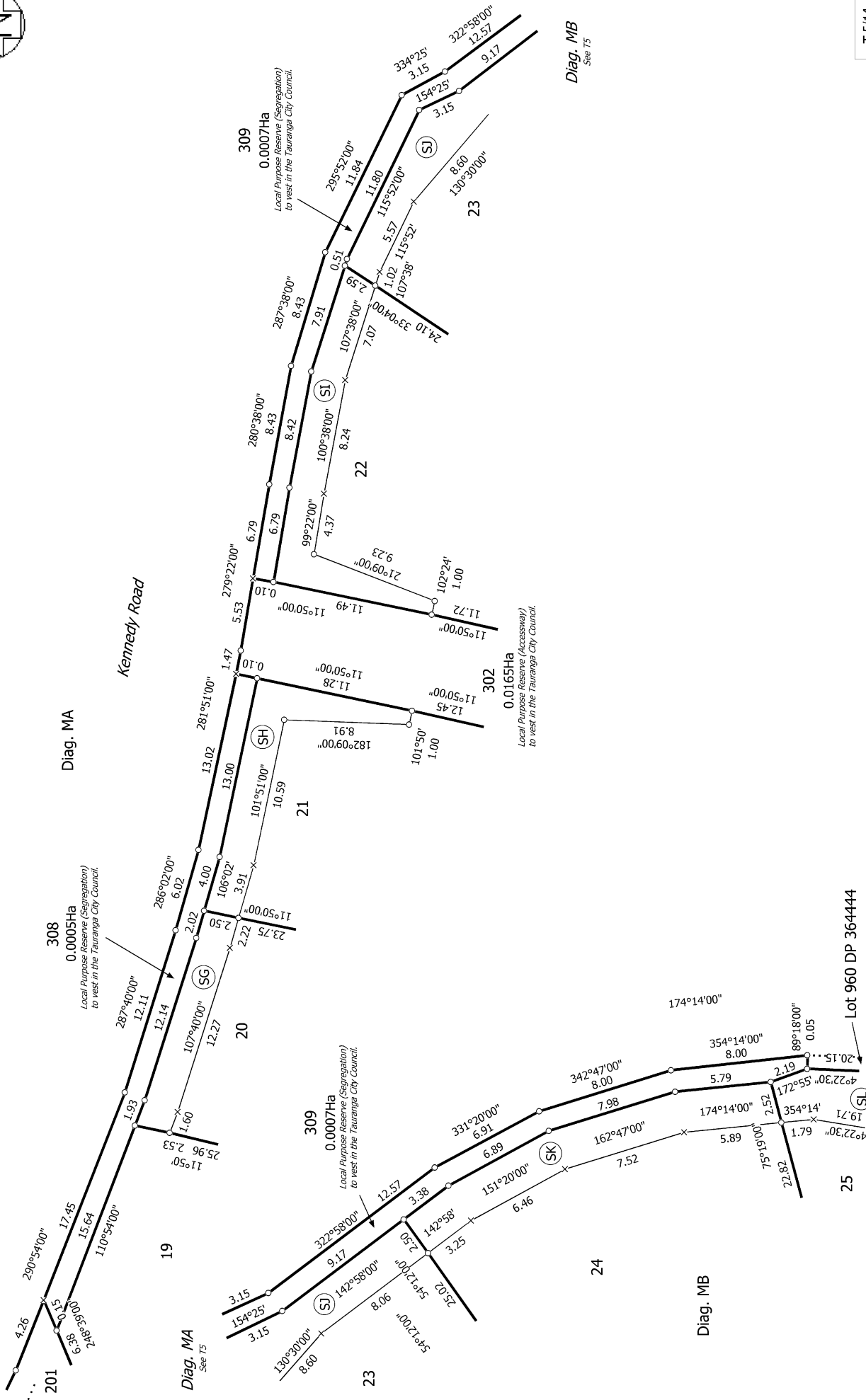
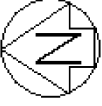
T 4/14

Land District: South Auckland  
 Digitally Generated Plan  
 Generated on: 28/09/2017 09:20am Page 13 of 23

Lots 1-109, 200-203, 210-212 and 300-309 being a subdivision of Lot 445 & 853  
 DP 414134 and Lot 3 & 852 DP 473714

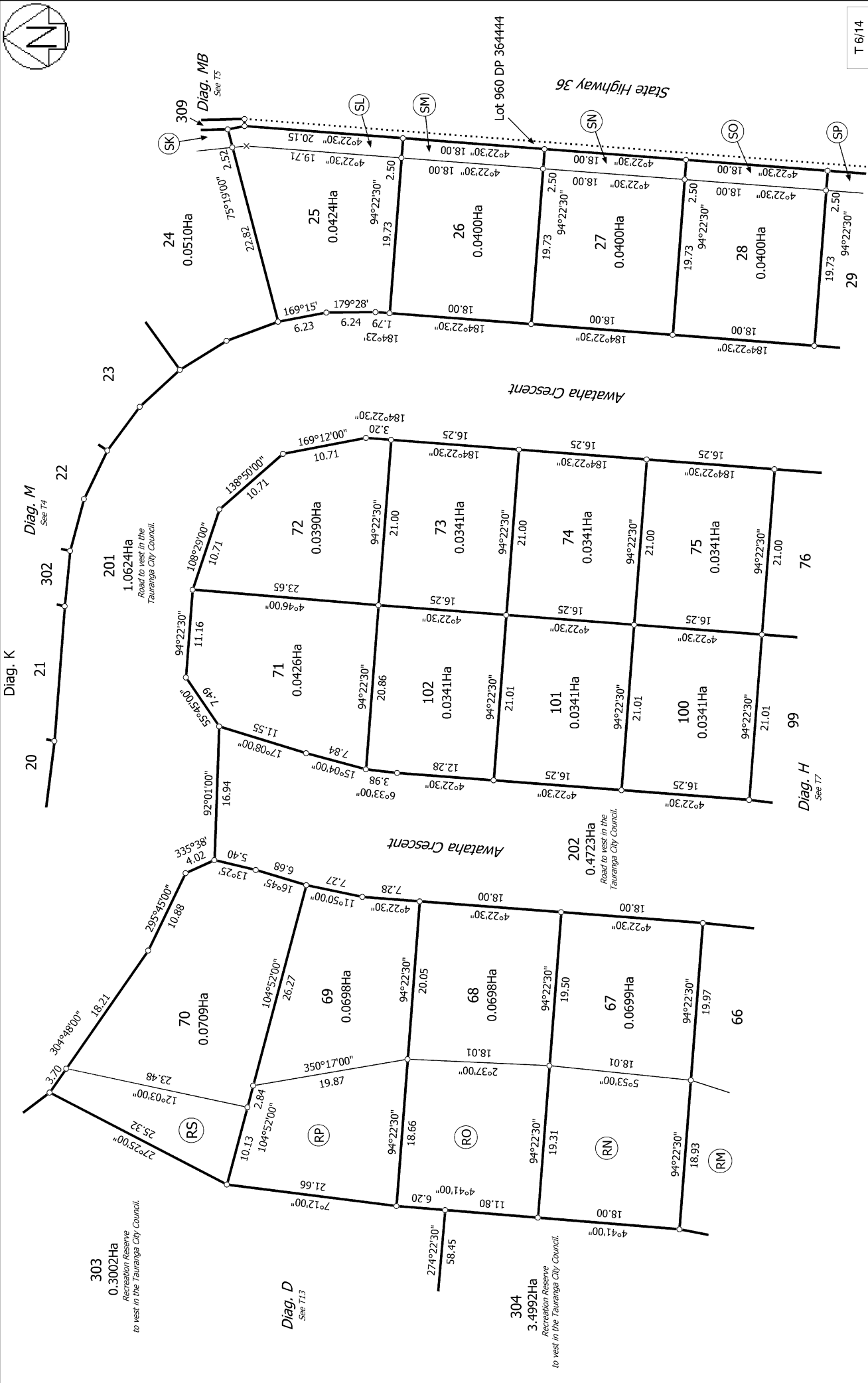
Surveyor: Michael Peter Dewhirst  
 Firm: Harrison Grierson Consultants Ltd

Title Plan  
 LT 512054  
 Approved on: 28/09/2017



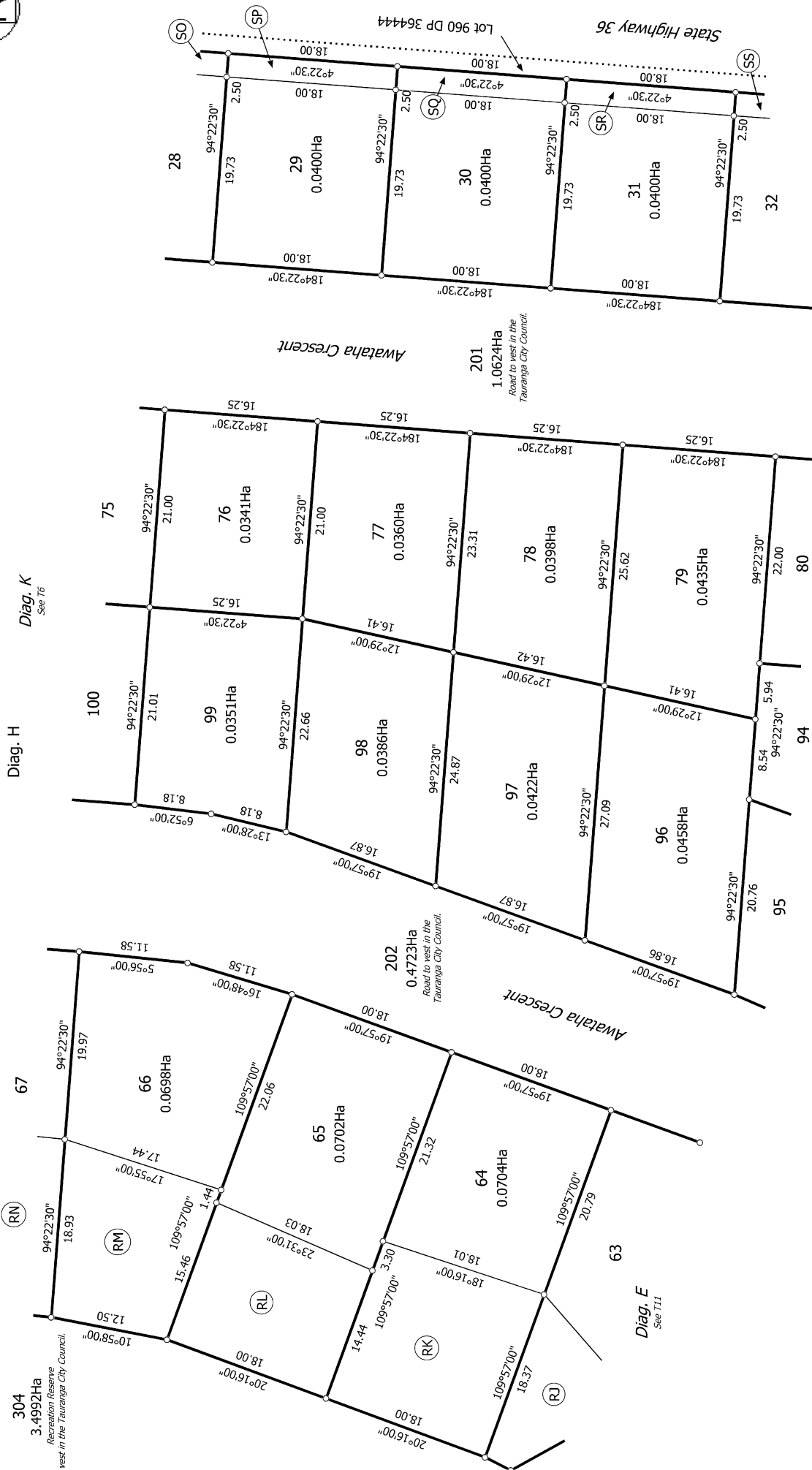
Diag. MB  
See T5

T 5/14



T 6/14

<p>Land District: South Auckland</p> <p><b>Digitally Generated Plan</b></p> <p>Generated on: 28/09/2017 09:20am Page 15 of 23</p>	<p><b>Lots 1-109, 200-203, 210-212 and 300-309 being a subdivision of Lot 445 &amp; 853 DP 414134 and Lot 3 &amp; 852 DP 473714</b></p> <p>Surveyor: Michael Peter Dewhirst Firm: Harrision Grierson Consultants Ltd</p>	<p><b>Title Plan</b> LT 512054 Approved on: 28/09/2017</p>
---	--	--



Diag. K  
See T6

Diag. H

Diag. E  
See T11

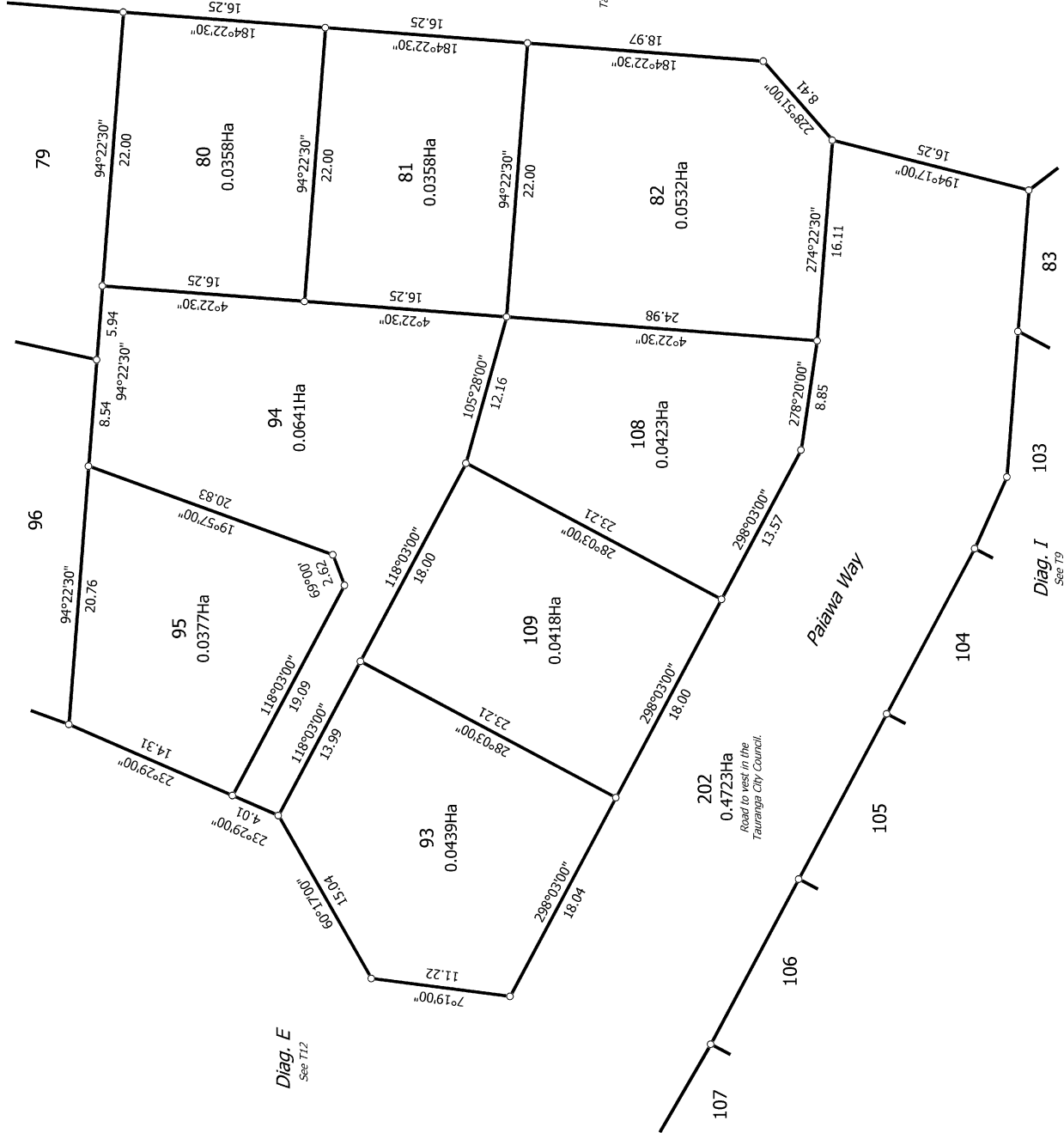
Diag. L  
See T8

T 7/14





Diag. L



Diag. E  
See 112

Diag. I  
See 79

Diag. H  
See 17

T 8/14

Land District: South Auckland

Digitally Generated Plan

Generated on: 28/09/2017 09:20am Page 17 of 23

Lots 1-109, 200-203, 210-212 and 300-309 being a subdivision of Lot 445 & 853  
DP 414134 and Lot 3 & 852 DP 473714

Surveyor: Michael Peter Dewhirst  
Firm: Harrison Grierson Consultants Ltd

Title Plan  
LT 512054

Approved on: 28/09/2017

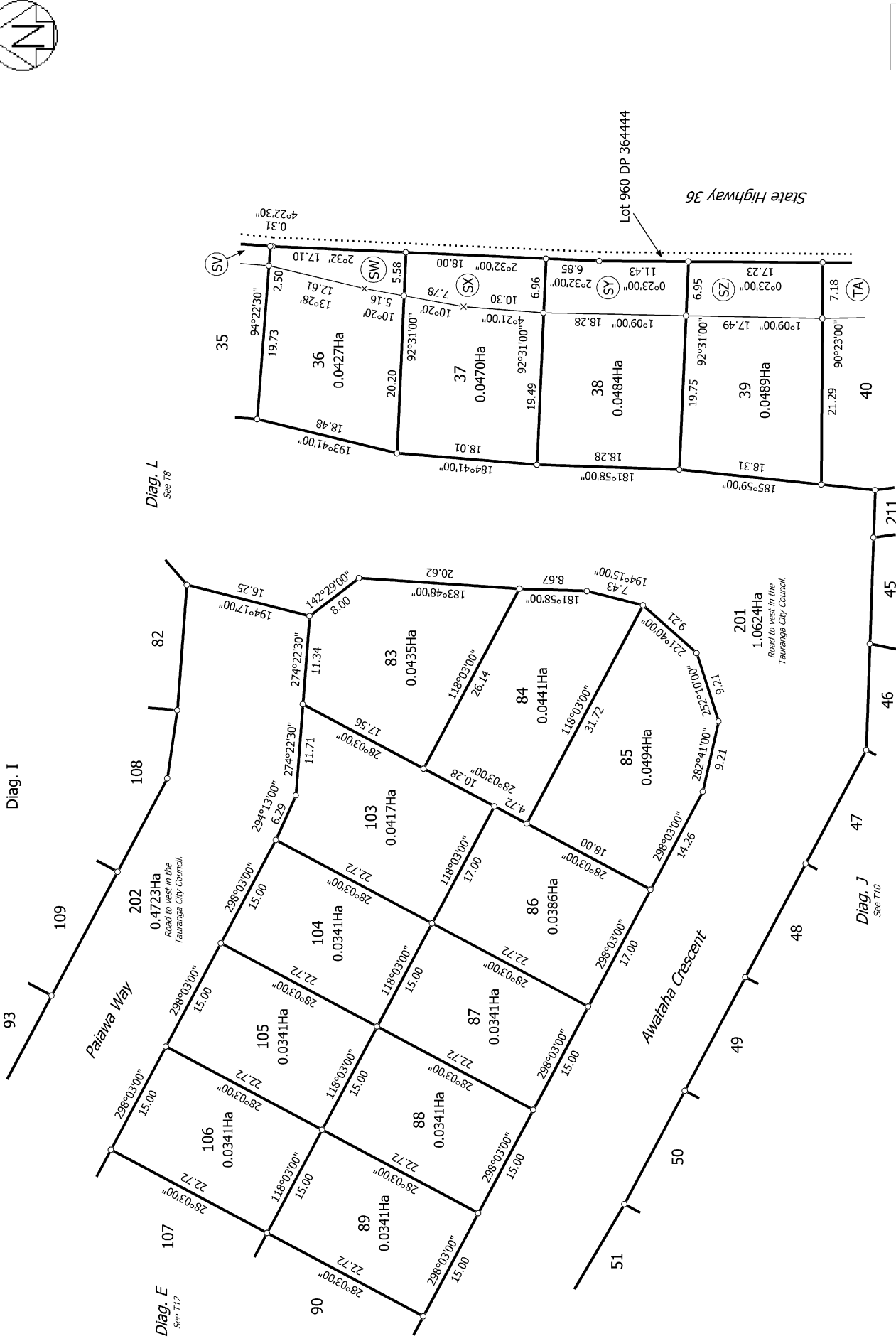


Diag. I

Diag. J

Diag. E

Diag. L



T 9/14

Land District: South Auckland

Digitally Generated Plan

Generated on: 28/09/2017 09:20am Page 18 of 23

Lots 1-109, 200-203, 210-212 and 300-309 being a subdivision of Lot 445 & 853

DP 414134 and Lot 3 & 852 DP 473714

Surveyor: Michael Peter Dewhirst

Firm: Harrison Grierson Consultants Ltd

Title Plan

LT 512054

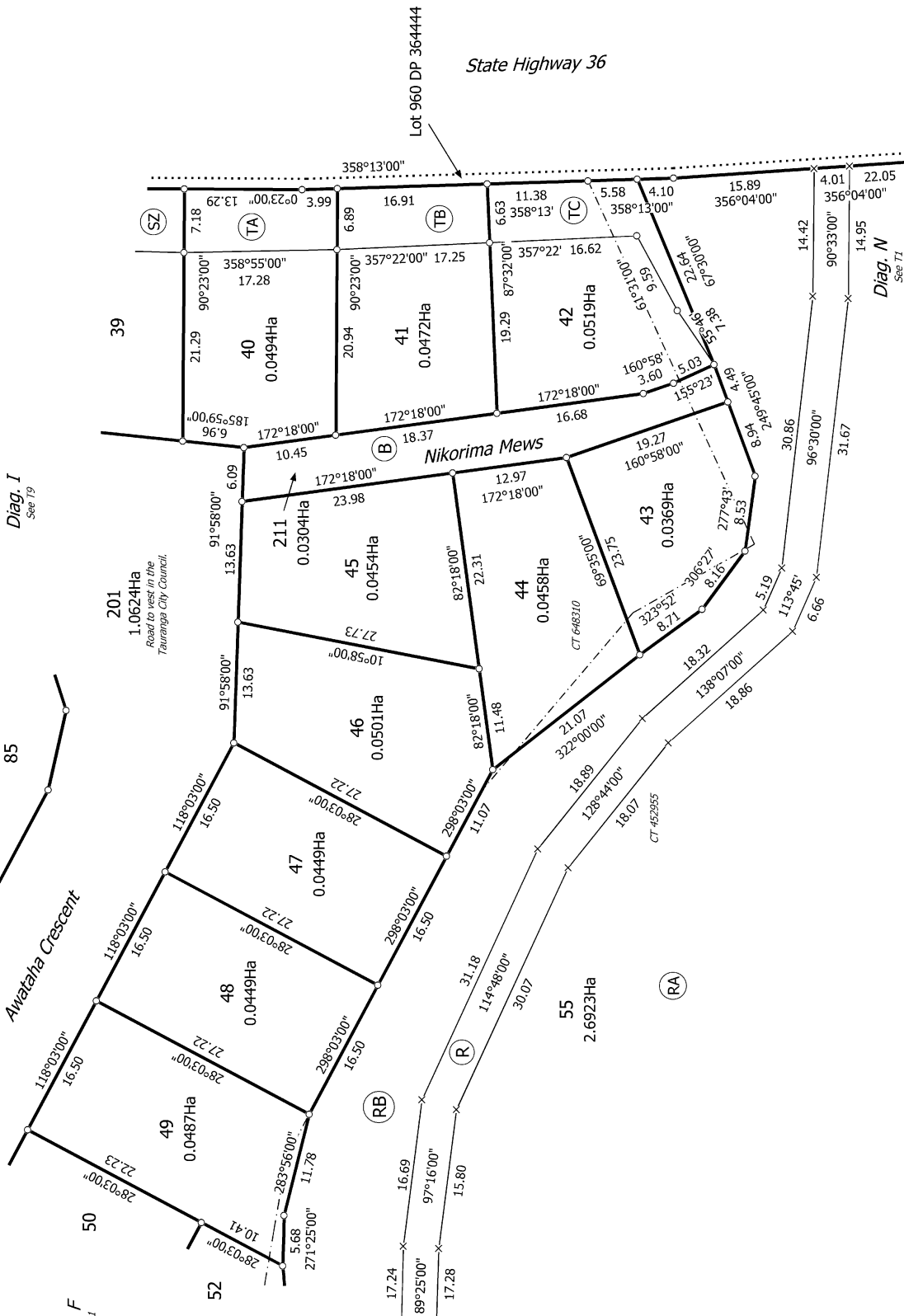
Approved on: 28/09/2017



Diag. J

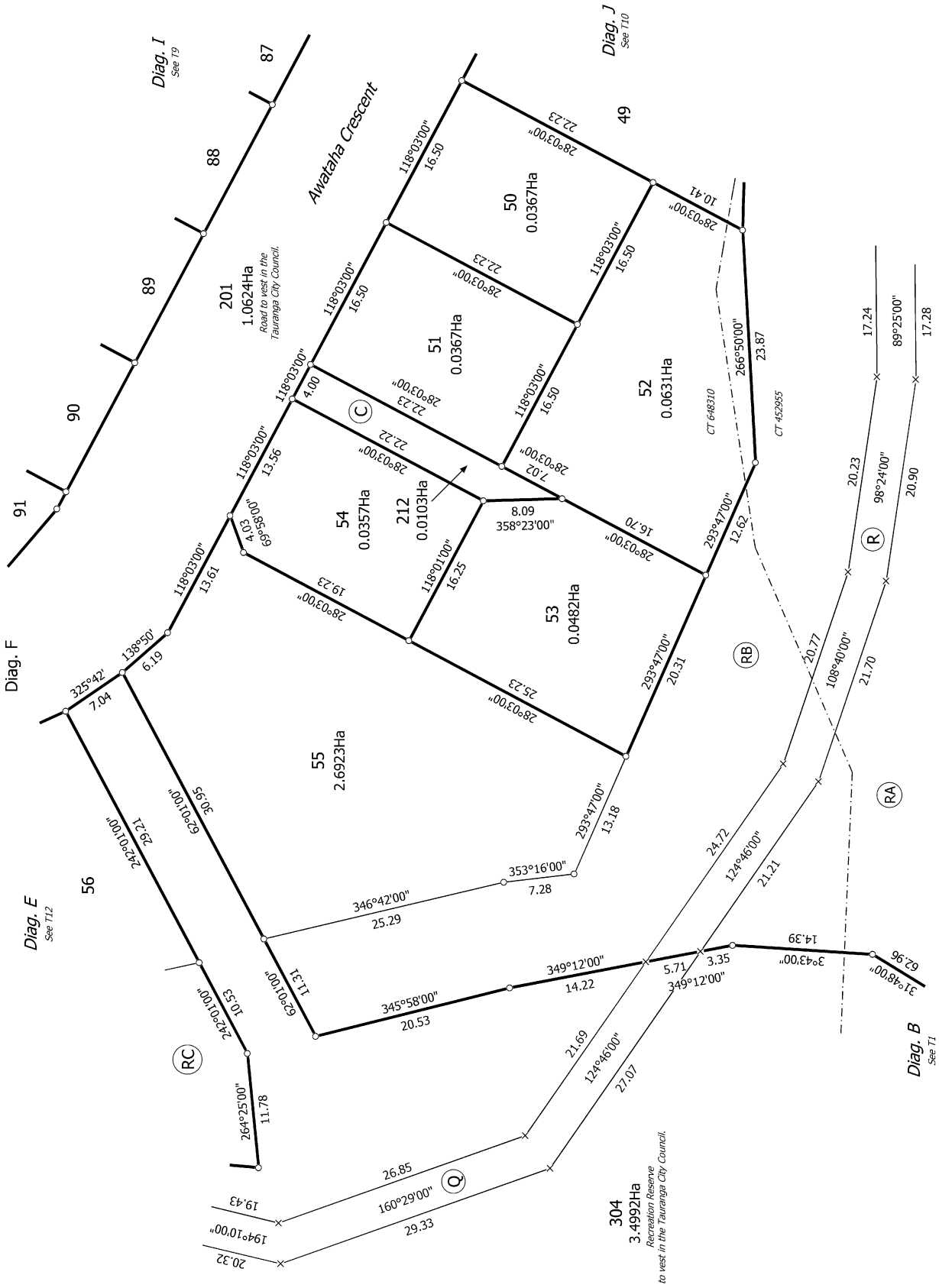
Diag. I  
*See T9*

Diag. F  
*See T11*



T 10/14

Land District: South Auckland <b>Digitally Generated Plan</b> <small>Generated on: 28/09/2017 09:20am   Page 19 of 23</small>	Lots 1-109, 200-203, 210-212 and 300-309 being a subdivision of Lot 445 & 853 DP 414134 and Lot 3 & 852 DP 473714	Surveyor: Michael Peter Dewhirst Firm: Harrison Grierson Consultants Ltd	Title Plan LT 512054 Approved on: 28/09/2017
---	---	---	--

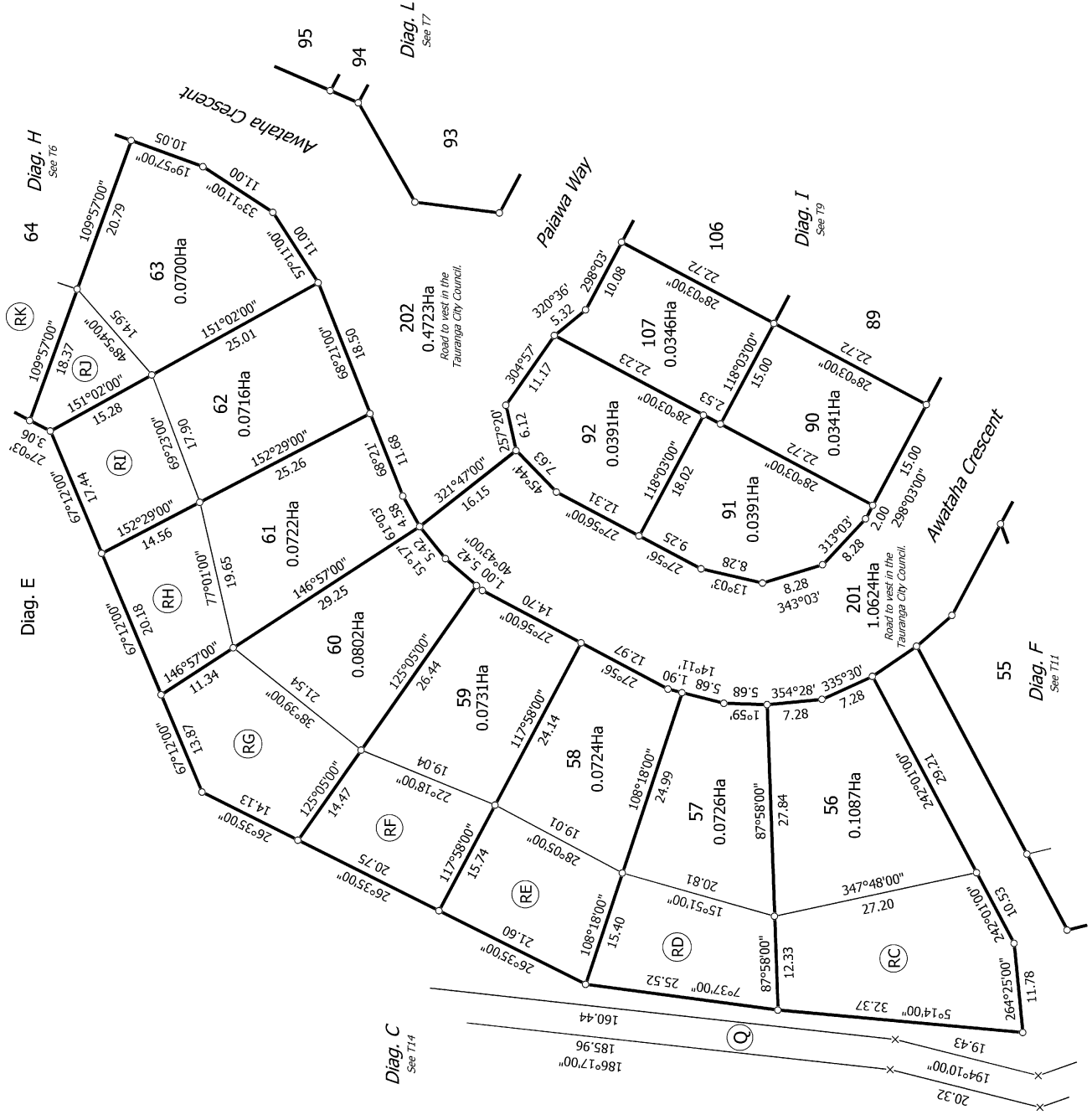


T 11/14

**Lots 1-109, 200-203, 210-212 and 300-309 being a subdivision of Lot 445 & 853  
 DP 414134 and Lot 3 & 852 DP 473714**

Surveyor: Michael Peter Dewhirst  
 Firm: Harrison Grierson Consultants Ltd

**Title Plan  
 LT 512054  
 Approved on: 28/09/2017**



304  
3.4992Ha  
Recreation Reserve  
to west in the Tauranga City Council.

T 12/14

Land District: South Auckland

Digitally Generated Plan

Generated on: 28/09/2017 09:20am Page 21 of 23

Lots 1-109, 200-203, 210-212 and 300-309 being a subdivision of Lot 445 & 853

DP 414134 and Lot 3 & 852 DP 473714

Surveyor: Michael Peter Dewhirst

Firm: Harrison Grierson Consultants Ltd

Title Plan

LT 512054

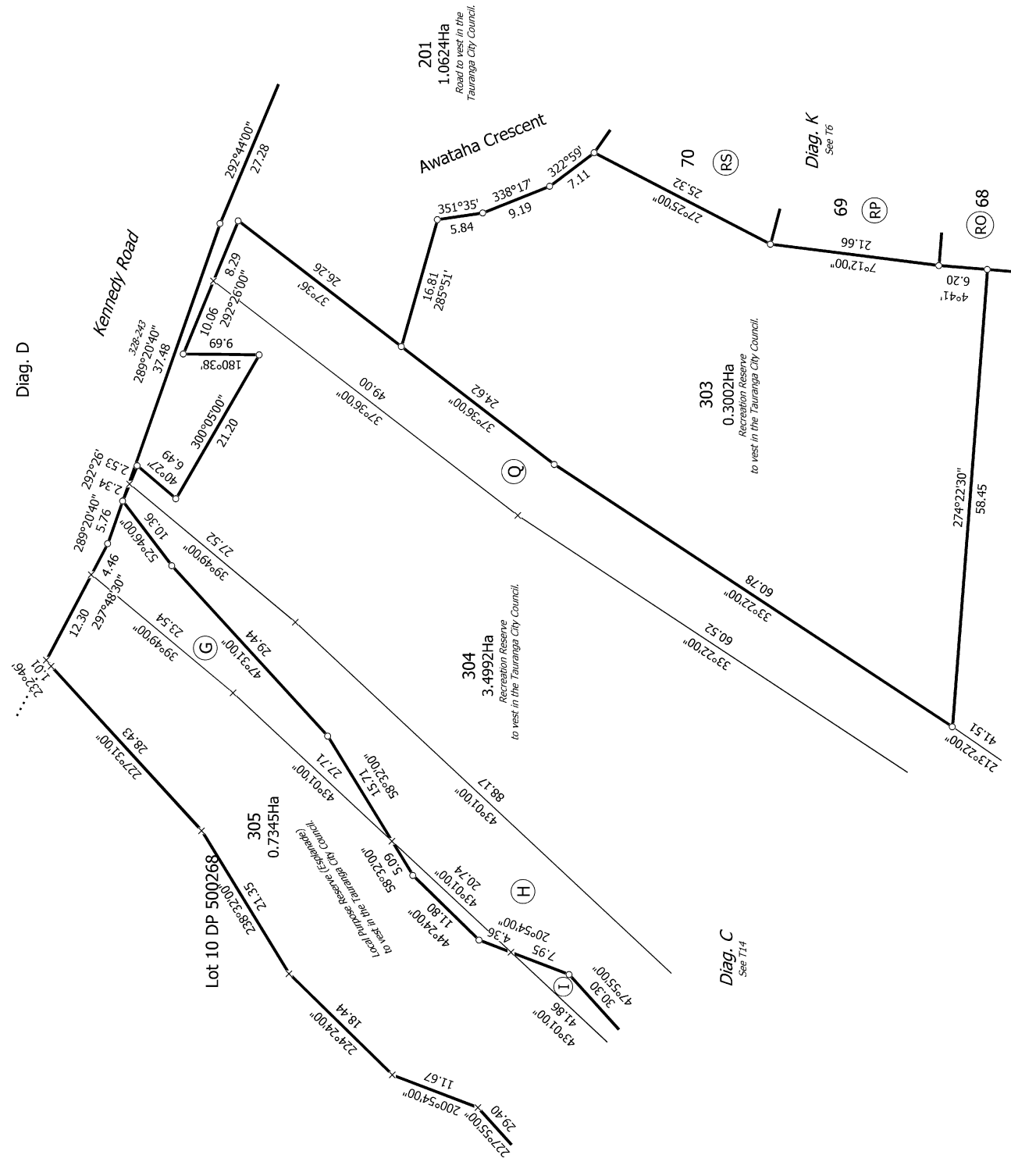
Approved on: 28/09/2017



Diag. D

Kennedy Road

Awataha Crescent



T 13/14

Land District: South Auckland

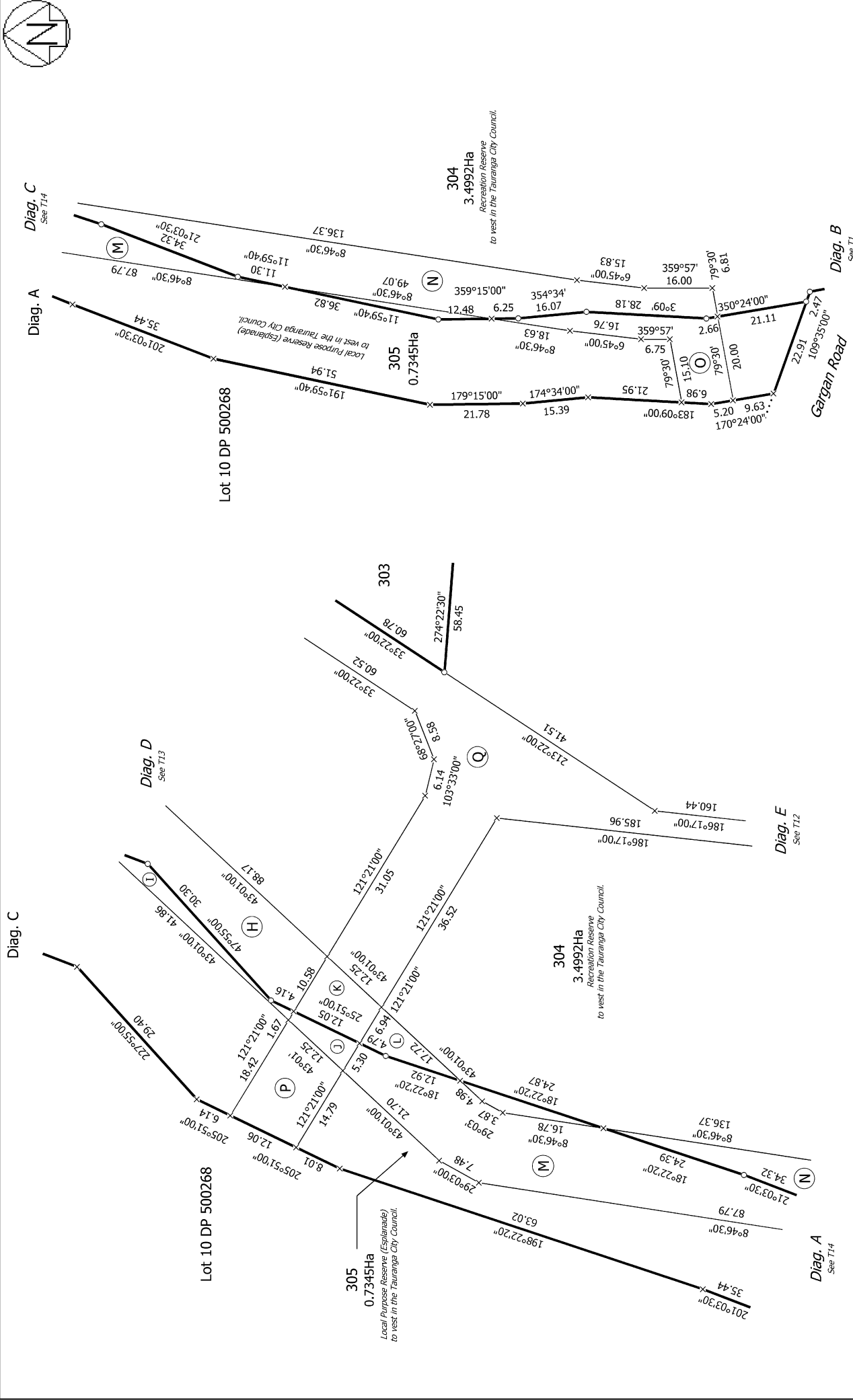
Digitally Generated Plan

Generated on: 28/09/2017 09:20am Page 22 of 23

Lots 1-109, 200-203, 210-212 and 300-309 being a subdivision of Lot 445 & 853  
DP 414134 and Lot 3 & 852 DP 473714

Surveyor: Michael Peter Dewhirst  
Firm: Harrison Grierson Consultants Ltd

Title Plan  
LT 512054  
Approved on: 28/09/2017



T 14/14

<p>Land District: South Auckland</p>	<p>Surveyor: Michael Peter Dewhirst Firm: Harrisson Grierson Consultants Ltd</p>	<p><b>Title Plan</b> LT 512054 Approved on: 28/09/2017</p>
<p><b>Digitally Generated Plan</b> Generated on: 28/09/2017 09:20am Page 23 of 23</p>		

**Lots 1-109, 200-203, 210-212 and 300-309 being a subdivision of Lot 445 & 853 DP 414134 and Lot 3 & 852 DP 473714**